

**KD-Validated Anti-KHSRP Rabbit Monoclonal Antibody**  
**Rabbit monoclonal antibody**  
**Catalog # AGI1566****Specification****KD-Validated Anti-KHSRP Rabbit Monoclonal Antibody - Product Information**

Application	WB, FC, ICC
Primary Accession	<a href="#">Q92945</a>
Reactivity	Rat, Human, Mouse
Clonality	Monoclonal
Isotype	Rabbit IgG
Calculated MW	Predicted, 73 kDa , observed , 73 kDa KDa
Gene Name	KHSRP
Aliases	KHSRP; KH-Type Splicing Regulatory Protein; FUBP2; KSRP; FBP2; Far Upstream Element-Binding Protein; FUSE-Binding Protein; P75; Epididymis Secretory Sperm Binding Protein; KH Type-Splicing Regulatory Protein; FUSE Binding Protein 2
Immunogen	A synthesized peptide derived from human KHSRP

**KD-Validated Anti-KHSRP Rabbit Monoclonal Antibody - Additional Information**

Gene ID	8570
<b>Other Names</b>	
Far upstream element-binding protein 2, FUSE-binding protein 2, KH type-splicing regulatory protein, KSRP, p75, KHSRP, FUBP2	

**KD-Validated Anti-KHSRP Rabbit Monoclonal Antibody - Protein Information****Name** KHSRP**Synonyms** FUBP2**Function**

Binds to the dendritic targeting element and may play a role in mRNA trafficking (By similarity). Part of a ternary complex that binds to the downstream control sequence (DCS) of the pre-mRNA. Mediates exon inclusion in transcripts that are subject to tissue- specific alternative splicing. May interact with single-stranded DNA from the far-upstream element (FUSE). May activate gene expression. Also involved in degradation of inherently unstable mRNAs that contain AU-rich elements (AREs) in their 3'-UTR, possibly by recruiting degradation machinery to ARE-containing mRNAs.

**Cellular Location**

Nucleus. Cytoplasm. Note=A small proportion is also found in the cytoplasm of neuronal cell bodies and dendrites.

## Tissue Location

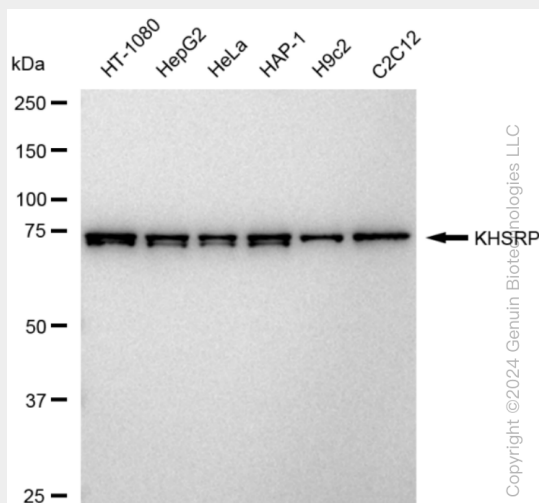
Detected in neural and non-neural cell lines.

## KD-Validated Anti-KHSRP Rabbit Monoclonal Antibody - Protocols

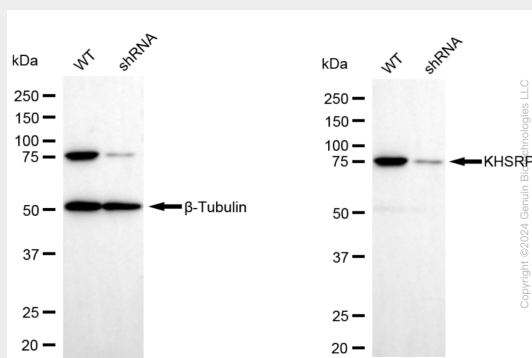
Provided below are standard protocols that you may find useful for product applications.

- [Western Blot](#)
- [Blocking Peptides](#)
- [Dot Blot](#)
- [Immunohistochemistry](#)
- [Immunofluorescence](#)
- [Immunoprecipitation](#)
- [Flow Cytometry](#)
- [Cell Culture](#)

## KD-Validated Anti-KHSRP Rabbit Monoclonal Antibody - Images

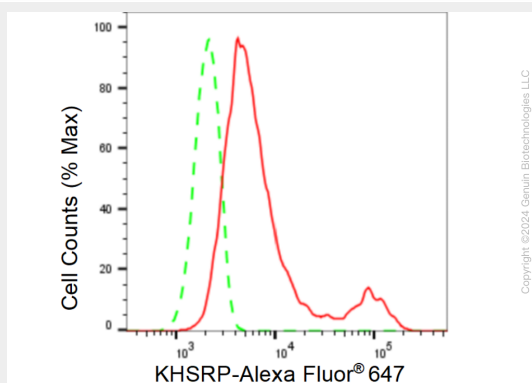


Western blotting analysis using anti-KHSRP antibody (Cat#AGI1566). Total cell lysates (30 µg) from various cell lines were loaded and separated by SDS-PAGE. The blot was incubated with anti-KHSRP antibody (Cat#AGI1566, 1:5,000) and HRP-conjugated goat anti-rabbit secondary antibody respectively.

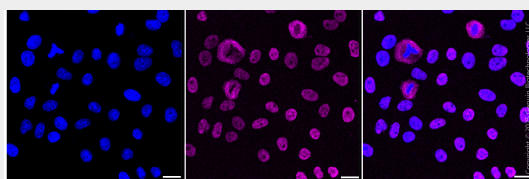


Western blotting analysis using anti-KHSRP antibody (Cat#AGI1566). KHSRP expression in wild type (WT) and KHSRP shRNA knockdown (KD) HeLa cells with 30 µg of total cell lysates. β-Tubulin serves as a loading control. The blot was incubated with anti-KHSRP antibody (Cat#AGI1566,

1:5,000) and HRP-conjugated goat anti-rabbit secondary antibody respectively.



Flow cytometric analysis of KHSRP expression in HepG2 cells using KHSRP antibody (Cat#AGI1566, 1:2,000). Green, isotype control; red, KHSRP.



Immunocytochemical staining of HepG2 cells with anti-KHSRP antibody (Cat #AGI1566, 1:1,000). Nuclei were stained blue with DAPI; KHSRP was stained magenta with Alexa Fluor® 647. Images were taken using Leica stellaris 5. Protein abundance based on laser Intensity and smart gain: Medium. Scale bar, 20  $\mu$ m.